

## ISPpu22, a novel insertion sequence in the *oprD* porin gene of a carbapenem-resistant *Pseudomonas aeruginosa* isolate from a burn patient in Tehran, Iran

Davood Kalantar-Neyestanaki<sup>1</sup>, Mohammad Emaneini<sup>2</sup>, Fereshteh Jabalameli<sup>2</sup>,  
Morovat Taherikalani<sup>3</sup>, Akbar Mirsalehian<sup>2\*</sup>

<sup>1</sup>Department of Microbiology, School of Medicine, Kerman University of Medical Sciences, Kerman, Iran.

<sup>2</sup>Department of Microbiology, School of Medicine, Tehran University of Medical Sciences, Tehran, Iran.

<sup>3</sup>Department of Microbiology, School of Medicine, Lorestan University of Medical Sciences, Khoramabad, Iran.

Received: March 2015, Accepted: September 2015

### ABSTRACT

**Background and Objectives:** The *oprD* mutation and AmpC overproduction are the main mechanisms of intrinsic resistance to carbapenems such as imipenem and meropenem in *Pseudomonas aeruginosa*.

**Materials and Methods:** In this study, we investigated intrinsic resistance to carbapenems including mutation of *oprD* and AmpC overproduction in a carbapenem-resistant *P. aeruginosa* isolated from a burn patient by phenotypic and molecular methods.

**Results:** In our study, the carbapenem-resistant *P. aeruginosa* isolate was resistant to imipenem, meropenem, cefepime, gentamicin, ceftriaxone, carbenicillin, aztreonam and ciprofloxacin but was susceptible to ceftazidime and polymyxin B. The minimum inhibitory concentrations (MICs) against imipenem, meropenem and ceftazidime were 64 µg/ml, 16 µg/ml and 2 µg/ml, respectively. The isolate was ESBLs and AmpC overproducer. No carbapenemase activity was detected by Modified Hodge test (MHT). This isolate was carrying only *bla*<sub>OXA-10</sub>. PCR amplification and sequencing of *oprD* performed on isolate resulted in PCR product of 2647bp. Sequence analysis of the 2647bp product revealed insertion of a sequence of 1232 bp at position 8 in coding region of *oprD*.

**Conclusion:** According to the results of this study, *oprD* mutation and AmpC overproduction can cause the main mechanism of resistance of *P. aeruginosa* to carbapenems.

**Keywords:** ISPpu22, *oprD*, AmpC, Carbapenem-resistant *P. aeruginosa*

### INTRODUCTION

*Pseudomonas aeruginosa* is a ubiquitous organism present in many diverse environmental settings and

it is an important cause of bacterial infections associated with hospitalization (1). It presents a serious therapeutic challenge for treatment of related infections because the majority of isolates show a high level of intrinsic resistance to antimicrobial drugs and has potential to acquire resistance (2,3). Carbapenems such as imipenem and meropenem are the major antibiotics used for treatment of *P. aeruginosa* infections (2,3). In recent years, carbapenem resistance has developed among *P. aeruginosa* worldwide (2-4). Several mechanism including loss of the outer

\*Corresponding author:

Address: Department of Microbiology, School of Medicine  
Tehran University of Medical Sciences  
100 Poursina St., Keshavarz Blvd, Tehran, Iran.  
Tel- Fax: 098- 021- 8895- 5810  
E-mail: mirsaleh@tums.ac.ir

membrane OprD porin, efflux-pumps over-expression and production of  $\beta$ -lactamases are involved in resistance to carbapenems. However, *oprD* mutation and AmpC overproduction are the main mechanisms of intrinsic resistance to carbapenem. Loss of the outer membrane OprD porin causes blocking of entrance of carbapenems particularly imipenem into the cell (5,6). One of the factors that causes loss of the OprD is the disruption of *oprD* by insertion sequence (IS) elements (7). Also, the mutation of *oprD* usually couples with AmpC over-expression and thus leads to increased resistance to imipenem (8,9). In this study, we report a novel insertion sequence in the *oprD* porin gene of a carbapenem-resistant *P. aeruginosa* isolate from a burn patient in Tehran, Iran.

## MATERIALS AND METHODS

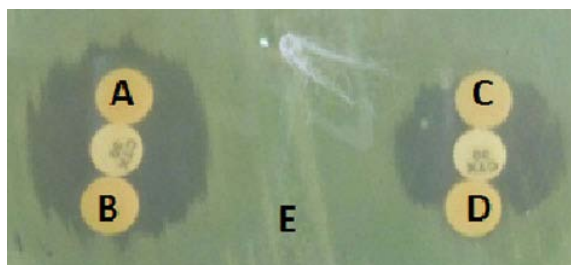
The carbapenem-resistant *P. aeruginosa* strain was isolated in 2011 from a wound sample of a female burn patient who was admitted to Shahid Motahari Hospital of Tehran University of Medical Sciences. The identification of isolate was performed by standard biochemical tests (10). The antibiotic resistance pattern of isolate was determined using disk diffusion method according to the CLSI guidelines (11). The following antibiotics (MAST, UK) were tested: imipenem (10  $\mu$ g), meropenem (10  $\mu$ g), polymyxin B (300 Unit), ceftazidime (30  $\mu$ g), cefepime (30  $\mu$ g), gentamicin (10  $\mu$ g), amikacin (10  $\mu$ g), ceftriaxone (30  $\mu$ g), carbenicillin (30  $\mu$ g), aztreonam (30  $\mu$ g) and ciprofloxacin (5  $\mu$ g). The isolate was also screened for production of carbapenemase using the Modified Hodge test (11). The isolate screened for extended spectrum  $\beta$ -lactamases (ESBLs) production using combined double-disk test, double-disk synergy and  $\beta$ -lactamase disk test (9,11). The  $\beta$ -lactamase disk test is based on use of Tris-EDTA (TE) buffer to permeabilize a bacterial cell and release of  $\beta$ -lactamases into the external environment. In brief, the surface of a Mueller-Hinton agar plate was inoculated with a lawn of the cefotaxime (CTX) susceptible (*P. aeruginosa* ATCC 27853) according to the standard disk diffusion method. A CTX (30 $\mu$ g) disk was placed on the bacterial lawn on the surface of the Mueller-Hinton agar and flanked by two blank disks, each containing 20  $\mu$ l of a 1:1 mixture of saline and 100X Tris-EDTA solution. Colonies of the test strain and control strains were applied to blank disks (Fig.1). Flattening

or indentation of the growth inhibition zone of the CTX disk at the side of blank disks containing the test strain indicated the release of  $\beta$ -lactamase. The minimum inhibitory concentrations (MICs) of imipenem (IMI), meropenem (MEM) and ceftazidime (CAZ) were determined in micro broth dilution assay. Susceptibility breakpoints were defined according to CLSI recommendations (11). AmpC overproduction was confirmed according to the method of Rodríguez-Martínez et al. (12). Furthermore, the presence of carbapenemase genes (*bla*<sub>VIM</sub>, *bla*<sub>IMP</sub>, *bla*<sub>GIM</sub>, *bla*<sub>AIM</sub>, *bla*<sub>SPM</sub>, *bla*<sub>NDM</sub>, *bla*<sub>SIM</sub>, *bla*<sub>OXA-48</sub>, *bla*<sub>KPC</sub> and *bla*<sub>GES</sub>) and ESBLs genes (*bla*<sub>TEM</sub>, *bla*<sub>SHV</sub>, *bla*<sub>PER</sub>, *bla*<sub>PSE</sub>, *bla*<sub>CTX-M</sub> and *bla*<sub>OXA-10</sub>) were investigated by PCR method as previously described (4). PCR amplification and sequencing of *oprD* and the IS*Ppu22* was performed using primers *oprD*-F-1-5'-CGCCGACAAGAAGAACTAGC-3' and *oprD*-R-5'-GTCGATTACAGGATCGACAG-3' (9) and with additional primer designed in this study (IS*Ppu22*-F-5'-GGTAGCCGTATACACCTCCG-3', *oprD*-F-2-5'-TCGATGCCTTCGGCTACCT-3')

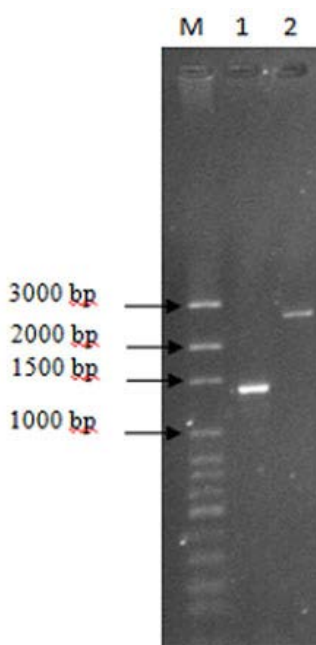
## RESULTS

The carbapenem-resistant *P. aeruginosa* isolate was resistant to imipenem, meropenem, cefepime, gentamicin, ceftriaxone, carbenicillin, aztreonam and ciprofloxacin but was susceptible to ceftazidime and polymyxin B using disk diffusion method. MICs revealed a high resistance to imipenem (MICs=64  $\mu$ g/ml). MICs against meropenem and ceftazidime were 16 and 2 $\mu$ g/ml, respectively. This strain was AmpC overproducer. Addition of cloxacillin reduced the MICs from 64 to 16 $\mu$ g/ml for imipenem. No carbapenemase activity was detected in MHT. Diameter of inhibition zone around the antibiotics in combined disk test and double-disk synergy was zero without detection of ESBLs by these tests but  $\beta$ -lactamase disk test was positive for this isolate (Fig. 1). PCR results were negative for *bla*<sub>TEM</sub>, *bla*<sub>SHV</sub>, *bla*<sub>PER</sub>, *bla*<sub>PSE</sub>, *bla*<sub>CTX-M</sub>, *bla*<sub>OXA-48</sub>, *bla*<sub>KPC</sub>, *bla*<sub>GES</sub>, *bla*<sub>VIM</sub>, *bla*<sub>IMP</sub>, *bla*<sub>GIM</sub>, *bla*<sub>AIM</sub>, *bla*<sub>SPM</sub>, *bla*<sub>NDM</sub> and *bla*<sub>SIM</sub> genes. This isolate was positive only for *bla*<sub>OXA-10</sub>. PCR amplification and sequencing of *oprD* performed on strain resulted in PCR product of 2647bp instead of 1413 bp by *oprD*-F-1 and *oprD*-R primers (Fig. 2). Sequence analysis of the 2647bp product revealed insertion of a sequence of 1232 bp at position 8 in coding region

of *oprD*. This IS that had 97% identity with IS3 family transposed from *P. aeruginosa* PA96 (GenBank accession no. CP007224). This IS named IS*Ppu22*, belonging to the IS3 family according to the IS finder database nomenclature (<https://www-is.biotoul.fr>). The full sequence of the *oprD* gene interrupted by this novel IS element has been deposited in the GenBank database with accession no. KJ825703.



**Fig.1.** β-lactamase Disk Test. A, B; Negative controls (*P. aeruginosa* ATCC 27853 and *E. coli* ATCC 25922 ), C; Positive control, D; Clinical isolate and E; Lawn culture (*P. aeruginosa* ATCC 27853).



**Fig.2.** PCR product of *oprD*, Lane M: DNA size marker, Lane 1:PAO1, Lane 2: Clinical isolate

## DISCUSSION

In this study, the isolate was positive for β-lactamase

by β-lactamase disk test method. This result shows a probable activation of one of the efflux pumps system and impermeability, or both, against beta-lactam antibiotics which causes falsely negative results in β-lactamase detections in combined disk method and double-disk synergy (4,8). This investigation showed that, in the absence of carbapenemases, the *oprD* mutation and AmpC over expression can cause resistance to carbapenems, however, *oprD* mutation can cause decreased meropenem susceptibility and AmpC over expression not effective on meropenem (5,6,13). Literature revealed various routes, including deletion or insertion of sequences, can cause of *oprD* inactivation. Recently, IS elements disrupting of *oprD* has been reported in France, USA, China, Korea and Spain among resistant carbapenem *P. aeruginosa* isolates (7,12). In this study AmpC-β-lactamase caused a reduction in susceptibility to imipenem but not to meropenem. These data suggest that AmpC may play an important role in the level of intrinsic susceptibility of *P. aeruginosa* to imipenem. Quale, Rodríguez and Lee et al, reported that AmpC-β-lactamase causes an increase of MIC to carbapenems in clinical *P. aeruginosa* isolates (3,12-15). Therefore, mutation of *oprD* and AmpC overproduction are the main mechanisms of carbapenem resistance in the absence of acquired carbapenemases such as metallo-beta-lactamases.

## CONCLUSION

According to the results in our study, intrinsic resistance mechanism such as *oprD* mutation and AmpC overproduction are the main mechanism of resistance of *P. aeruginosa* to carbapenems.

## ACKNOWLEDGMENT

This research has been supported by Tehran University of Medical Sciences & Health Services grant no19204//91-04-30.

## REFERENCES

1. Fadeyibi OI , Raji MA, Ibrahim NA, Ugburo AO, Ademiluyi S. Bacteriology of infected burn wounds in the burn wards of a teaching hospital in Southwest

- Nigeria. *Burns* 2013; 39: 168-173.
2. Shua JC, Chiaa JH, Siud LK, Kuoa AJ, Huange SH, Sua LH, et al. Interplay between mutational and horizontally acquired resistance mechanisms and its association with carbapenem resistance amongst extensively drug-resistant *Pseudomonas aeruginosa* (XDR-PA). *Int J Antimicrob Agents* 2012; 39: 217-222.
  3. Lee J, Ko KS. OprD mutations and inactivation, expression of efflux pumps and AmpC, and metallo- $\beta$ -lactamases in carbapenem-resistant *Pseudomonas aeruginosa* isolates from South Korea. *Int J Antimicrob Agents*. 2012; 40: 168-172.
  4. Kalantar Neyestanaki D, Mirsalehian A, Rezagholizadeh F, Jabalameli F, Taherikalani M, Emaneini M. Determination of extended spectrum beta-lactamases, metallo-beta-lactamases and AmpC-beta-lactamases among carbapenem resistant *Pseudomonas aeruginosa* isolated from burn patients. *Burns* 2014.
  5. Wolter DJ, Khalaf N, Robledo IE, Va'zquez GJ, Sante' MI, Aquino EE, et al. Surveillance of carbapenem-resistant *Pseudomonas aeruginosa* isolates. *Antimicrob Agents Chemother* 2009; 53: 1660-1664.
  6. Lister PD, Wolter DJ, Hanson ND. Antibacterial-resistant *Pseudomonas aeruginosa*: clinical impact and complex regulation of chromosomally encoded resistance mechanisms. *Clin Microbiol Rev* 2010; 22: 582-610.
  7. Diene MS, L'homme T, Bellulo S, Stremmer N, Dubus JC, Mely L, et al. ISPa46, a novel insertion sequence in the oprD porin gene of an imipenem-resistant *Pseudomonas aeruginosa* isolate from a cystic fibrosis patient in Marseille, France. *Int J Antimicrob Agents* 2013; 42: 268-271.
  8. Doi Y, Paterson LD. Detection of plasmid-mediated class C  $\beta$ -lactamases. *Int J Infect Dis* 2007; 11: 191-197.
  9. Willems E, Verhaegen J, Magerman K, Nys S, Cartuyvels R. Towards a phenotypic screening strategy for emerging  $\beta$ -lactamase in Gram-negative bacilli. *Int J Antimicrob Agents* 2013; 41: 99-109.
  10. Mahon CR, Lehman DC, Manuselis G. Text book of diagnostic microbiology. 3rd ed. Philadelphia, PA, USA; 2007; 564-86.
  11. Clinical and Laboratory Standards Institute. Performance standards for antimicrobial susceptibility testing. Twenty-Third Inform Suppl. 2013; 33(1): M100-S23.
  12. Rodríguez-Martínez J M, Poirel L, Nordmann P. Molecular epidemiology and mechanisms of carbapenem resistance in *Pseudomonas aeruginosa*. *Antimicrob Agents Chemother* 2009; 53: 4783-4788.
  13. Xavier DE, Picão RC, Girardello R, Fehlberg LC, Gales AC. Efflux pumps expression and its association with porin down-regulation and  $\beta$ -lactamase production among *Pseudomonas aeruginosa* causing bloodstream infections in Brazil. *BMC Microbiology* 2010; 10(217): 1-7.
  14. Quale J, Bratu S, Gupta J, Landman D. Interplay of efflux system, ampC, and oprD expression in carbapenem resistance of *Pseudomonas aeruginosa* clinical isolates. *Antimicrob Agents Chemother* 2006; 50:1633-1641.
  15. Mirsalehian A, Kalantar-Neyestanaki D, Nourijelyani K, Asadollahi K, Taherikalani M, Emaneini M, Jabalameli F. Detection of AmpC- $\beta$ -lactamases producing isolates among carbapenem resistant *P. aeruginosa* isolated from burn patient. *Iran J Microbiol* 2014; 6: 306-310.